



Chief Officer – City Development & Regeneration

Recruitment pack





Welcome

Thank you for your interest in the role of Chief Officer – City Development & Regeneration and for considering Aberdeen as a place where you can use your knowledge, experience, and passion to make a difference.



Our new organisational structure has just been approved by Full Council, creating a City Regeneration & Environment function and within this, we have an exciting opportunity for Chief Officer – City Development & Regeneration.

This role is critical to our city, to drive forward our economic strategy, lead our impressive museum, galleries and archive services and to drive our city's cultural sector, together with partners. It's a fantastic opportunity to be part of our transition as an energy city to support our net zero ambitions and work with stakeholders to deliver success for Aberdeen.

Aberdeen, as a place – is a city with and of energy. The city council reflects this and has a determination to play its part in the ongoing prosperity of Aberdeen and its citizens. This challenging role presents a unique opportunity to work with colleagues within the council and with external partners to make a difference. A collaborative and supportive senior team will enable our successful candidate to thrive.

If this role sounds attractive, and you are passionate about making a difference to our city and the lives of our citizens, and believe you have the vision, experience and personal qualities to deliver for Aberdeen then we'd love to hear from you.

Gale Beattie
Director, Corporate Management Team, Aberdeen City Council

About Aberdeen

Aberdeen lies at the heart of a region recognised for its quality of life. It is a city which effortlessly combines the benefits of metropolitan life with a range of sporting activities and outdoor pursuits as well as easy access to the stunning scenery of Royal Deeside and the beautiful North-East coast.



Arts and Culture

Along with a fantastic range of first-class shops, hotels and restaurants, the city has a varied cultural scene, so you're sure to find something to interest you. We have an exciting calendar of events throughout the year including our award-winning festival of light 'Spectra'; street art festival 'Nuart'; and 'TrueNorth' music festival - to name a few! His Majesty's Theatre and the Music Hall attract a range of West End shows and famous names and our art gallery and museums hold some of the finest collections in Scotland. The city also has a state-of-the-art events complex, P&J Live, which welcomes large conferences, events, concerts and shows throughout the year.



Sports and the Outdoors

If you enjoy sports and the great outdoors, there are a number of great sporting facilities across the city, including our Sport Aberdeen venues, Aberdeen Sports Village, Transition Extreme and Aberdeen Snowsports Centre. And if golf's your game, there are a great variety of golf courses both within and around the city. Our parks and gardens are second to none and if you venture further afield, you'll find we're an easy drive to the Cairngorm Mountains for walking or skiing, while Royal Deeside, the North East coast and whisky and castle trails are just as accessible.



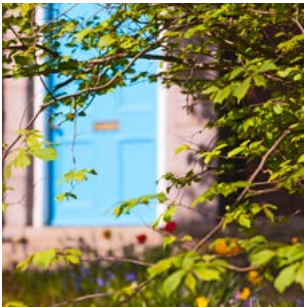
Schools and Universities

Aberdeen has an excellent range of educational facilities from nursery, primary and secondary schools to further and higher education institutions. We are proud to offer two of Scotland's most successful and well-respected universities. The University of Aberdeen is Scotland's third oldest university. It is located in the picturesque and historic area of Old Aberdeen and attracts students from around the world, whilst the Robert Gordon University is described as modern and dynamic and is consistently ranked amongst the UK's top universities. North-East Scotland College (NESCOL), one of Scotland's largest and most successful colleges is a key partner in completing our top-class city offering.



Living in Aberdeen

We have a variety of housing options within the city centre, suburbs and rural areas with a choice of properties ranging from traditional granite flats and townhouses to new-build properties or unique cottages and farm steadings. For more information, please visit www.aspc.co.uk



Transport

Aberdeen is fortunate to have an excellent transport network as well as a high standard of accessible public transport services across the city and to the surrounding areas of Aberdeenshire. The city is also well served by frequent bus and train links south to Edinburgh, Glasgow and beyond, as well as north to Inverness and the Highlands. Aberdeen International Airport is just a 15-minute drive from the city centre and offers extensive domestic and international flights.



Health and Wellbeing

We are proud to offer first rate healthcare provision - within Foresterhill, Europe's largest Health Campus; NHS Grampian's largest hospital, Aberdeen Royal Infirmary; a new Emergency Care Centre; the state-of-the-art Royal Aberdeen Children's Hospital; Aberdeen Maternity Hospital and the University of Aberdeen's School of Medicine and Dentistry. In addition, Aberdeen City Health and Social Care Partnership is at the forefront of the provision of fully integrated community health and social care services with a strong focus on prevention and early intervention offering a range of services and supports with the aim of helping everyone in the city to achieve fulfilling healthy lives.



Image courtesy of NHS Grampian





The Role

Chief Officer – City Development & Regeneration

£99,064 per annum

About the role

The Chief Officer – City Development & Regeneration will provide the strategic lead for the delivery and development of the council's City Regeneration & Environment function - economic development, culture and events.

The role will have responsibility for working with a range of strategic internal and external stakeholders in ensuring and securing the economic success of Aberdeen.

The Chief Officer – City Development & Regeneration will lead on the council's economic development and culture portfolios, whilst also playing a critical role in our journey to achieving our net zero ambitions and delivery of organisational priorities.

This is an exciting opportunity for a skilled communicator to join our team and deliver success for the place and people of Aberdeen.

Relationships

Reporting to the Director of City Regeneration & Environment, the Chief Officer – City Development & Regeneration will be an intrinsic part of the Senior Management Team (SMT) as well as the extended Corporate Management Team (ECMT) and will ensure excellent working relationships with all appropriate stakeholders including other functional areas, elected members, trade union representatives and employees.

Requirements

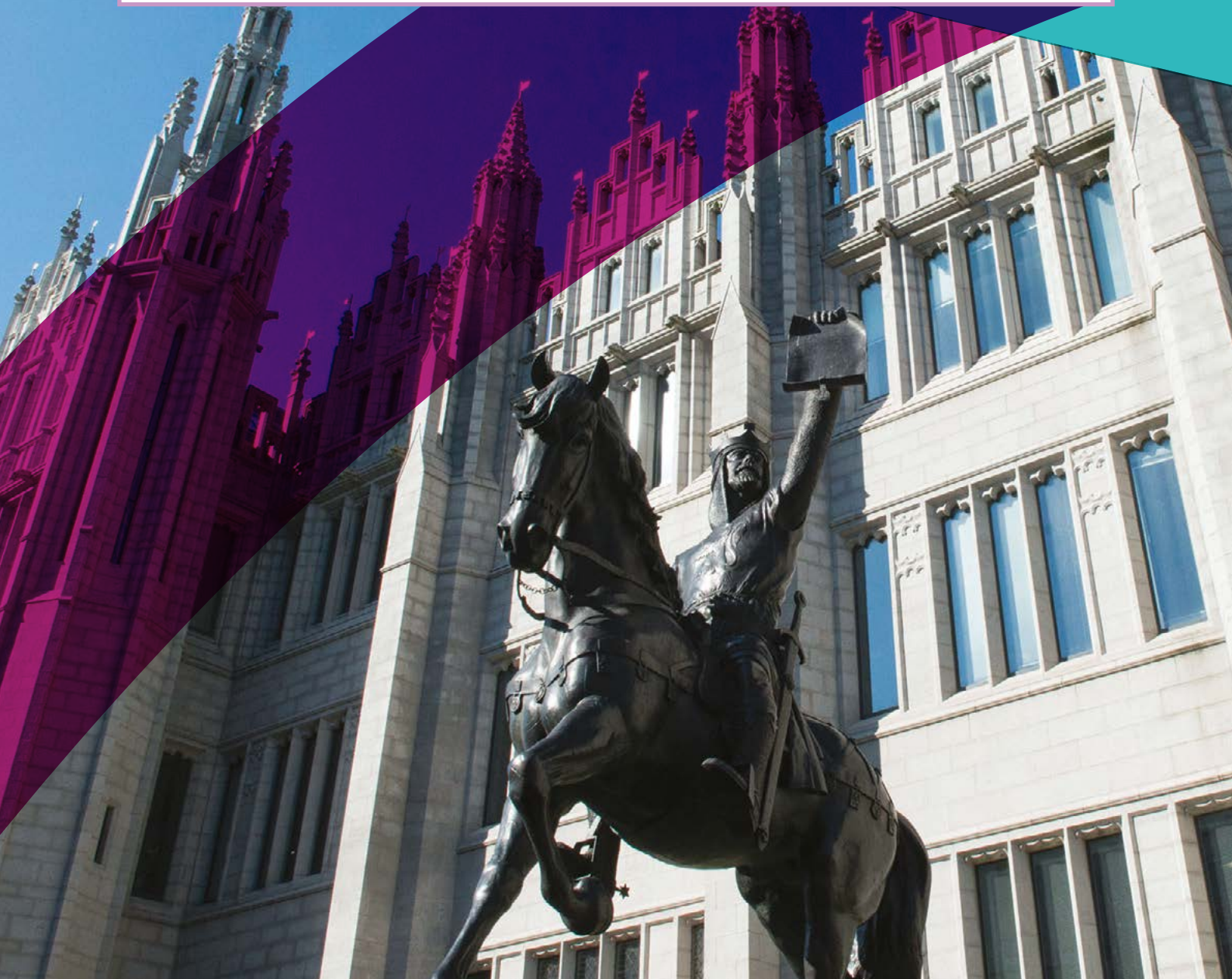
Educated to degree level, and / or with a professional qualification and with extensive leadership experience related to the role, you'll come to us with a strong track record of developing and managing strategic partnerships and services. In addition, you'll also have demonstrable experience of leading service change and improvement and decision making in a complex environment.

Full details about the role and the requirements are included within [the job profile.](#)

The Role - Supporting Information

For further information about Aberdeen City Council and to support your application, you may find it useful to consider the following documents:

- [ACC Organisation Structure](#)
- [Local Outcome Improvement Plan](#)
- [Aberdeen Outcomes Framework](#)
- [Regional Economic Strategy](#)
- [City Region Deal](#)
- [Net Zero Aberdeen Routemap](#)



How to Apply

We hope that you have found the information in this pack useful and informative and that we have inspired you to make your application. If you would like to discuss the role, please contact: Gale Beattie, Director of City Regeneration & Environment, by email on directoratpa@aberdeencity.gov.uk

To apply, please visit: [Chief Officer – City Development & Regeneration](#)

Selection Timetable

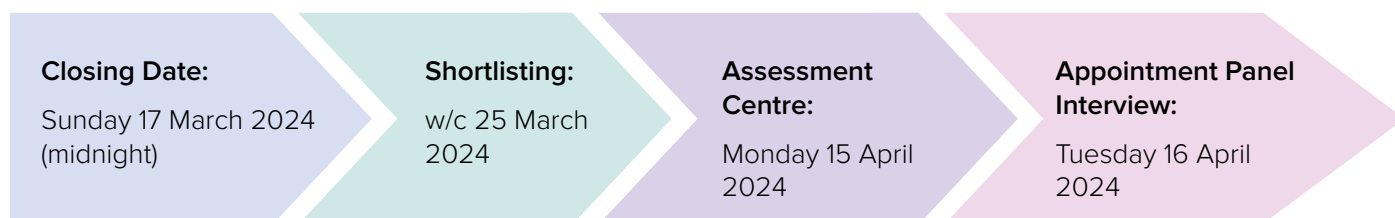


Image © Felix Mooneeram